

Knoxville Philatelic Society News

February 2008

Volume 2008, Number 2

Tom Broadhead, Editor
Ralph Dinwiddie, Publisher
KPS - P.O. Box 50422
Knoxville, TN 37950-0422



APS Chapter 1189-119261

www.stampclubs.com/knoxville/index.htm
www.virtualstampclub.com/apschapknoxville.html

Southeast Federation
of Stamp Clubs

A New Tennessee Flag Stamp

As part of the 1976 U.S. Bicentennial commemoration, the USPS issued a sheet of 50 stamps featuring state flags. Unfortunately, the Tennessee state flag was shown with the three stars that represent the state's three grand divisions arranged incorrectly!



In a recent article in Linn's (January 14, 2008), John Hotchner draws attention to this mistake and to the new set of state flag stamps that will be issued this year through 2010. Although a

resolution was passed by the Tennessee legislature and signed by the governor to issue a corrected stamp in 1976, it was ignored by the USPS.

Students of Tennessee history know that two of the stars fall within the blue circle above the third. Nonetheless, the description of the flag approved by the legislature on April 17, 1905 states that "... the highest star shall be the one nearest the upper confined corner of the flag." This leaves the position of the stars a little ambiguous, and it is not uncommon to see the state flag flown "upside down" as depicted on the 1976 stamp.



Don't go running to the post office yet to purchase the new and improved Tennessee flag stamp. It will appear in 2010 in the third sheet of state flags. **But . . . do begin making plans to attend and volunteer to help at Knorpex 2008 on March 1-2.** It will a great show with exhibits, an excellent assortment of dealers, a live auction.

Tom Broadhead

President's Column

Are you missing out? What a great turnout we had for the KPS January meeting. Of about 60 members there were nearly 30 who attended the KPS meeting last month. Oh, and we had two collectors join our club in January. I really like the fact that we are growing. Apparently the KPS has a package put together that welcomes newcomers and keeps members coming back. Our membership has grown from about 45 in mid 2007 to now more than 60.

Speaking of membership, as of this writing we have 35 members paid up for the year. If you are one of the 30 who haven't paid your \$15.00 dues then please get them on in. And don't forget if you have been a paying member of the KPS for at least 20 years, AND are at least 70 years of age then you are eligible for Life Membership in the KPS and do not have to pay any dues (contributions are welcome).

It's time to get serious about Knorpex 2008 - March 1-2. The show cancel is at the USPS for approval, the cachet is in production, advertising is in stamp publications and our website is filled with show information. What can you do to make this show/bourse as successful as past? Put together a half-frame to a 10-frame stamp exhibit and mail your Knorpex 2008 exhibit form to reserve space. Get some stamp lots together to enter in the Knorpex live auction. The auction is always a highlight of the show. Be aware of the dates for submitting these forms, which are available at the KPS website (address in the header of this newsletter). Knorpex will need your help Saturday and Sunday setting up and taking down tables and exhibit frames, conducting the auction, and registration. Please sign up at the February meeting or drop me an email (jbpettway@comcast.net) with your intentions.

This stamp stuff is FUN. I look forward to seeing you at the February meeting.

Jim Pettway

Knoxville Philatelic Society Meeting – January 8, 2008

The January 2008 meeting of the Knoxville Philatelic Society was held at the Tennessee Valley Unitarian Universalistic Church on January 8, 2008. The meeting was held on the second Tuesday of the month, as New Years Day fell on the first Tuesday. Jim Pettway, President, called the meeting to order at 7:30 PM. Thirty members were present, the largest attendance in several years. Jim introduced new members, Carly Baskette and Roy Row, and thanked the attendees for such a large participation.

The formal meeting was preceded by a general, show and tell, swap and trade session, and Bruce Roberts continued the forum on exhibiting. The program was a very interesting and informative presentation by Tony Torres on *Censoring of Foreign Mails During the Third Reich Period*. Tony provided a hand out and passed around several examples of material from his collection.

After the program, the business meeting was held. Since the December meeting was the Christmas party, no minutes were taken. Pat Goebel presented the treasurer's report which reflected the club's year end financial status, which was approved.

In old business a vote on amending the club constitution, Section III, to allow for "Life Members" was tabled until the next meeting to allow for appropriate notification to be posted in the newsletter.

In new business, Knoxpex 2008 was the main area of discussion. Committees reported on: arrangements, advertising, cancellation, cachet, and the bourse.

The Knoxville Philatelic Society meets the 1st and 5th Tuesdays of each month at the Tennessee Valley Unitarian Universalist Church at 2931 Kingston Pike, Knoxville, TN 37919. Annual dues are \$15.00.

KPS Officers:

President	Jim Pettway
Past President	Mike Kauffman
Vice President	Ralph Dinwiddie
Treasurer	Pat Goebel
Secretary	Charlie Wade
Directors	Bruce Kinney, Stu Hanlein, Thomas Lane, Charlie Wade
APS Representative	Jim Pettway

Requests for information and submissions of articles and short notes of philatelic interest for the newsletter may be directed to Tom Broadhead, KPS, P.O. Box 50422, Knoxville, TN 37950-0422 – or by e-mail to tomwb50@aol.com.

Jim reminded all that the 2008 dues were now due and indicated that many had been received. He highlighted the topics for the coming month's programs and asked for program volunteers for the upcoming May, June, and July club meetings.

An announcement was made about the APS AmeriStamp Expo in Charlotte January 11-13 and members were encouraged to attend and show KPS support. We also had updates on the German Philatelic Society and the Precancel Stamp Society which are affiliated with KPS. Jim Pettway announced that three stamp collections had been donated to the club.

The Fifth Tuesday meeting and an Executive Board meeting will be held on January 29. At this meeting, APS Circuit books will be available for review and stamp purchase.

The meeting was adjourned at 9:30 PM.

Submitted by:
Charlie Wade, Secretary

Constitution Changes

The following have been approved by the KPS Board and membership. They are being published here, as required by the KPS constitution.

Article III - Members, Section 3 – Memberships shall consist of two types: regular and life. The qualifications for life membership shall be 20 years (or more) of membership in KPS and the attainment of the age of 70.

Article III - Members, Section 4 – The annual dues for regular members shall be paid in January of each year, and for new regular members shall be prorated beginning July 1. Any regular member three months delinquent in payment of dues shall be dropped from membership after due notification. Life members are not required to pay annual dues. Annual dues shall be \$15.00 for each regular member/household.

Stamp of the Month

This month's stamp is part of a definitive set issued from 1937-1942 by Great Britain. It features a cameo bust of King George VI, who had ascended the throne in 1937. The originally issued low denomination stamps of this design first appeared in dark colors and then were re-issued in lighter colors. This is the half penny, light green stamp produced in 1941. The four corners of the stamp show the heraldic flowers for (clockwise from top left) England, Scotland, Northern Ireland, and Wales.

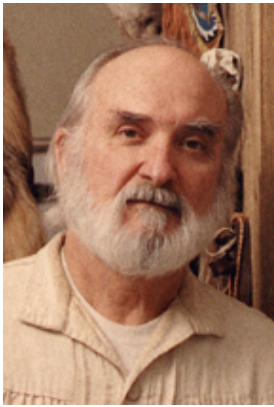


Thanks to Nicole Sanchez for the donation of these stamps.

Meet the Calles

By Tom Broadhead

At Knoppex 2006, I was intrigued by an excellent single frame exhibit shown by KPS member, Mike Kauffman that featured U.S. space stamps and cachets designed by Paul Calle and his son Chris Calle. Distinguished American graphic artists, the Calles are known as talented presenters of images of the American West and wildlife. Both are also prolific stamp designers.



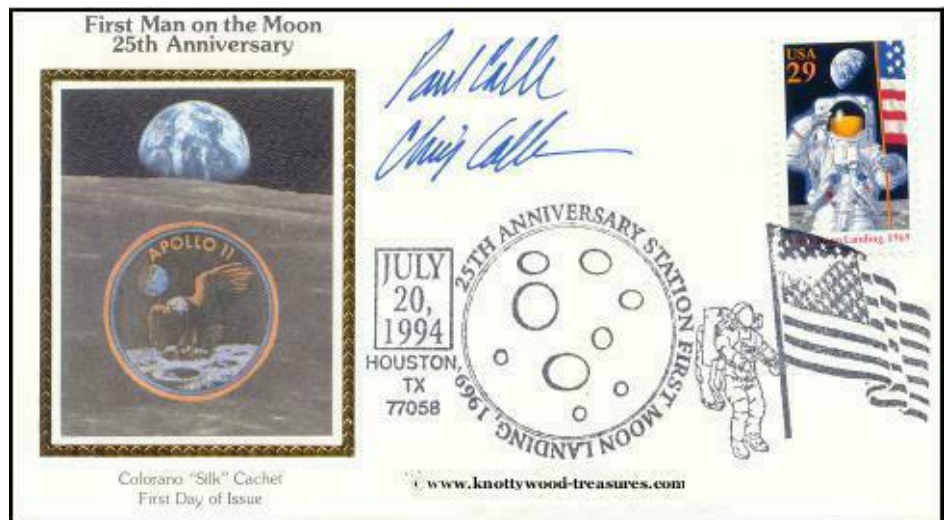
Paul Calle was born in 1928 and in 1962 was selected as an artist for NASA's Fine Art Program. Only a few years later in 1967, he designed his first space stamps, the spectacular se-tenant pair commemorating the Project Gemini space walk. Paul's son, Chris, was born in 1961



There are several web sites that feature information about this dynamic pair of artists, and some of those have examples of their art for sale. The most important site that I found, which also had the photos shown above, was www.knottywood-treasures.com. It has a wealth of biographical information, about Paul and Chris Calle and also has images of the many other U.S. stamps that they have designed. Although Knottywood Treasures has a link to a page where you can purchase first day dover cachets designed by Chris Calle and featuring his space stamps, none were available for sale when I checked.

Paul Calle has designed many outstandingly beautiful U.S. stamps, including the Douglas MacArthur and Robert Frost commemoratives and the Carousel Horses and Carousel Animals. He is especially well known for the 10c "Man on the Moon" airmail stamp of 1969, which was issued less than two months after the Apollo 11 landing and Neil Armstrong's famous walk on the moon. Chris Calle has designed more than 30 U.S. stamps and many more for the United Nations and several foreign countries. Among his U.S. designs are 16 for the Great Americans issue of 1986-1994, three of the transportation coils and many commemoratives.

In 1994, Paul and Chris Calle collaborated to design both a 29 cent regular postage stamp and a \$9.95 express mail stamp to commemorate the 25th anniversary of the moon landing. Both designs show the planting of the U.S. flag on the moon. A spectacular exhibit at AmeriStamp Expo in Charlotte last month was titled "The Eagle Has Landed" and showed some original artwork by the Calles related to the design of these stamps. The 29 cent (Scott 2841) is shown below. Check your Scott Catalog to find all of the Calle stamp designs!



This month's KPS Meeting – Tuesday, February 5

Volunteers Needed at Knoppex

We need you to volunteer for Knoppex 2008. As Jim Pettway mentions in his President's Letter this month, a lot of Knoppex 2008 work has been completed or is underway. Show Chair Gerald Schroedl will be looking for KPS members to volunteer for many events and activities beginning with set-up on the afternoon and evening of February 29 and ending with take-down late in the afternoon of March 2. In addition to setting up tables and exhibit frames and arranging chairs before and after the show, there is a great need for KPS members to volunteer as greeters at the registration table on both days and to help keep records during the live auction on Saturday night.

Knoppex 2008 – Show Schedule

Saturday, March 1	10:00 am Show Opens 6:00 pm Show Closes 6:30 pm Live Auction
Sunday, March 2	10:00 am Show Opens 1:30 pm Tennessee Precancel Stamp Society Meeting 2:30 pm Tennessee Germany Philatelic Society Meeting 4:00 pm Show Closes

New Society Chapters Meet at Knoppex

KPS members and visitors to Knoppex 2008 who are interested in precancel stamps or in German philately

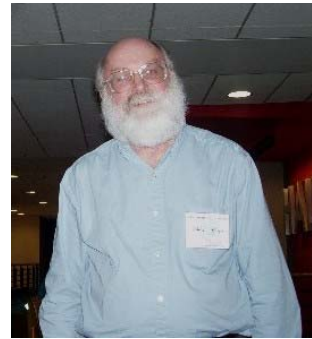
will have the opportunity to meet with local collectors with similar interests.



The Tennessee Precancel Stamp Society will meet at 1:30 on Sunday afternoon, followed by the Tennessee Germany Philatelic Society Meeting. Both groups will have meetings that will include some great show and tell programs and information about joining these newly chartered chapters of national philatelic organizations.

In the News – Adriean Mayor

It's always great to read about the great things that KPS members do outside of our club, and Adriean Mayor was featured in a December 26 article in the Knoxville News Sentinel. Other than collecting



insect topical stamps, Adriean is the curator of the new museum located in the Twin Creeks Science and Education Center of the Great Smoky Mountains National Park. The new museum doubles the space available for Adriean and many

visiting scientists to study specimens of plants and animals, some only recently discovered, from the biologically diverse mountains, valleys, and streams of the Smokies. Now we know what Adriean does when he's not collecting stamps – how fortunate to have a hobby that relates in part to your profession!

A Philatelic Christmas Gift

I don't know what you got as gifts over the holidays, but here is my favorite – refrigerator magnets! My wife



found these in Atlanta – a boxed set of 20 – each showing the front of a cover or a postal marking. The two shown here are my favorites. The



top one is a nice special delivery going from the U.S. to France in 1926, and the bottom one shows one of my favorite stamps – the 75c Potter of

the French 1925 Decorative Arts Series.

Next month's KPS Meeting – Tuesday, March 4