

Knoxville Philatelic Society News

February 2010

Volume 2010, Number 2

Tom Broadhead, Editor
Ralph Dinwiddie, Publisher
KPS - P.O. Box 50422
Knoxville, TN 37950-0422



APS Chapter 1189-119261

www.stampclubs.com/knoxville/index.htm
www.virtualstampclub.com/apschapknoxville.html

Southeast Federation
of Stamp Clubs

Where We Live

As KPS continues to grow, it is great to see that many former Knoxville members have kept their membership, even after moving far away. Recently, I did a quick census of KPS member addresses. Not surprisingly, 39 – a little more than half our members – live in Knox County. But maybe that is surprising. It's great to know that we have 34 more distant members, many of whom come to Knospex each year, and some of whom make the occasional Tuesday evening drive to Knoxville for monthly and 5th Tuesday meetings.

In Tennessee, we have members from Maryville, Loudon, Clinton, Dandridge, Kodak, Sevierville, Louisville, Rutledge, Oak Ridge, Kingston, Lenoir City, Morristown, Crossville, Maynardville, Harriman, Walland, Gatlinburg, Harrogate, Bybee, Fairfield Glade, and even from the towns of New Johnsonville and Paris, which are west of Nashville!

Elsewhere in the US, Norm Carlevato has moved to Longmont, Colorado; Nicole Sanchez lives in Columbus, Georgia; Ron Sarson lives in West Liberty, Ohio; and Tony Torres lives in Borger, Texas. All four of those out of state members contributed a lot to KPS when they lived here, as program presenters and officers, and we thank them for their continued interest.



for its birds of paradise, shown here.

Our long distance record goes to Stephen Floyd, who after a few months in Knoxville is back in Papua New Guinea with his family, who are missionaries there. PNG is a tropical pacific nation known

Tom Broadhead

President's Column

If you love learning about the various aspects of stamp and cover collecting then you've got to love all the philatelic resources available on the world wide web. I'm sure you are already aware of the American Philatelic Society's website and the one from *Linn's Stamp News*. And you have probably learned a lot from viewing items for sale at eBay, zillions of stamps, and various auction sites like Apfelbaum, Regency, H.R. Harmer, and Cherrystone. In addition, there are many specialist societies on the Web, such as, the American Air Mail Society, the Christmas Seal and Charity Stamp Society, the United States Stamp Society, Precancel Stamp Society, China Stamp Society and hundreds more. But, did you know there are hundreds of philatelic related videos on www.YouTube.com? At our first Saturday meeting, Tom Broadhead took the group on a tour of some of the award winning philatelic videos on YouTube. If you go to the YouTube website and do a search for "philately" you will find over 250 videos on the subject. Some of these are approximately an hour long and contain lectures by experts on a particular subject. Others typically range in length from 3 minutes to 10 minutes.

Tom also showed us two videos that he made on stamps of Paris. One of these videos actually was chosen as runner up in the APS YouTube challenge. Another one of my favorite YouTube videos showed how to use paper repairing techniques to repair a roughly opened envelope. It was fascinating and well worth watching. I encourage you to do a Google search on your stamp collecting area of interest and take advantage of the numerous resources at your disposal.

Ralph Dinwiddie

Knoxville Philatelic Society Meeting – January 5, 2010

The KPS met at the Tennessee Valley Unitarian Church for its regular monthly meeting. The meeting was called to order by President Ralph Dinwiddie. There were 23 members and visitors in attendance.

Announcements were headed by the reminder that there will be a special Saturday KPS meeting on January 9 at the UT McClung Museum from 1 until 3 p.m. The final version of the Knoxpex 2010 cancel was shown. Bruce Roberts announced that this is the final night to purchase items from the club's auction lots before they go up for sale in the Knoxpex live auction. Knoxpex chair, Roy Row agreed to be auction chair for the show. Jim Pettway said that he now has 11 dealers and is looking for two more. All members were encouraged to submit exhibits for the show. Thomas Lane presented the treasurer's report, which showed an ending balance for the year of \$8801.80.

Tom Broadhead presented the program, which included two power point presentations prepared by members of the France & Colonies Philatelic Society for its annual meeting last year. One, by Ron Hill of Denver, featured the 1938 semipostal issue of France and colonies intended to raise funds for cancer research. The other, by Ed Grabowski, explained a skilled forgery of a cover from Madagascar.

Following the program, it was announced that Russ Haese was making available for loan to the membership a copy of the 2008 Scott Catalog on CD.

The Knoxville Philatelic Society meets at 7:00 pm on the 1st and 5th Tuesdays of each month at the Tennessee Valley Unitarian Universalist Church at 2931 Kingston Pike, Knoxville, TN 37919.

Annual dues are \$15.00.

KPS Officers:

President	Ralph Dinwiddie
Past President	Roy Row
Vice President	Stu Hanlein
Treasurer	Thomas Lane
Secretary	Jo Mynatt
Directors	Richard Ehrlich, Jim Pettway, Bruce Roberts, Tom Broadhead
APS Representative	Jim Pettway

Requests for information and submissions of articles and short notes of philatelic interest for the news-letter may be directed to Tom Broadhead, KPS, P.O. Box 50422, Knoxville, TN 37950-0422 – or by e-mail to tomwb50@aol.com.

The meeting was adjourned at 8:05. Later, members were able to shop from the APS Circuit Sales Books.

Respectfully submitted,
Jo Mynatt, Secretary

New Express, Priority Stamps & Rates

Regular postal rates won't increase in 2010, but some special classes of mail will. The new priority mail rate is \$4.90 for a flat rate envelope, down from \$4.95. Express mail is a bit confusing - \$18.30, up from \$17.50 for a flat rate piece, but as low as \$13.65 for a local delivery. The



new stamps show U.S. bridges in the artistic style seen over the last few years. The images also show birds in flight. The Mackinac bridge in

Michigan is on the priority stamp, and the Bixby Creek Bridge in California is shown on the express stamp. (image copyright, USPS 2010)

Upcoming Events

For more events visit the calendar of the Southeast Federation of Stamp Clubs - www.stampclubs.com/events.

February 2 – KPS monthly meeting. Program will be by Tom Ringenbach – “Using Advertising Covers to Trace Local Economic History.”

March 2 – KPS monthly meeting and final preparations for Knoxpex 2010.

March 6-7 – Knoxpex 2010. The KPS annual show will feature the theme of the Centennial of the Boy Scouts of America and will be held at the Holiday Inn on Cedar Bluff Rd.

March 13-14 – Nashville Stamp Show 2010. Music Valley Event Center, 2416 Music Valley Dr., Nashville 37214. 10-6 Saturday, 10-4 Sunday.

Stamp of the Month

This month's stamp, a 1960 French definitive (Scott 968) depicts “Marianne,” an allegorical figure for the French republic. Typically printed in lake (a shade of dark red) and gray, some images are light gray, dark gray, or violet gray. The 25 centime stamp paid the domestic rate for a letter weighing not more than 20 grams.



To Cut or Not To Cut – Collecting Postal Stationery

By Tom Broadhead

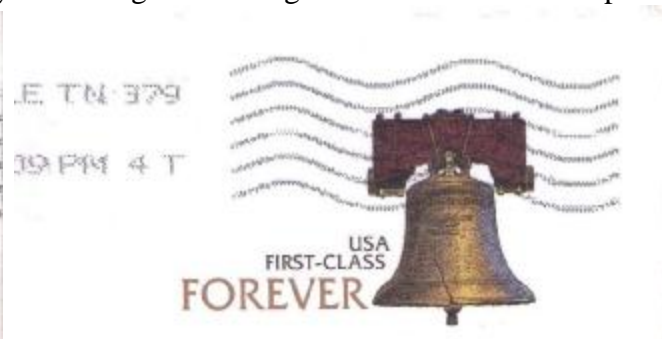
As a postal history collector, I am attracted to postal stationery – prestamped envelopes, postcards, and wrappers, with or without adhesive stamps added. Early in my collecting years, I was shown how to trim a “cut square” from a U.S. stamped envelope, and many U.S. envelopes are offered by dealers and auctions either as cut squares or “entires.” My interest in postal history gives me second thoughts about cut squares. The United States Postal Stationery Society’s web site, www.uspss.org, has a section called “Postal Stationery 101.” It advises that “Cut squares trimmed from corners of U. S. envelopes and wrappers may be saved if one is interested only in dies and paper types. Postal cards and foreign postal stationery are never collected as cut squares. Leave at least 5 to 10mm margin around the stamp design.”

Just checking one postal stationery dealer, Postalstationery.com, I found some good examples, by price, of the differences in squares and entire envelopes. The example below at left is a full corner U42 priced at \$300. Next to it is a mint cut square priced at \$140. They offer an entire, mint envelope for \$550. The Scott Catalog also distinguishes between cut squares and entires, but notice the premium price for the full corner example at far left. Many older collections will have examples of cut squares, but collecting the entire envelope or wrapper will always be preferable, even though storage will be a bit more bulky. Note, however, that the USPSS web site says that US postcards are never collected as cut

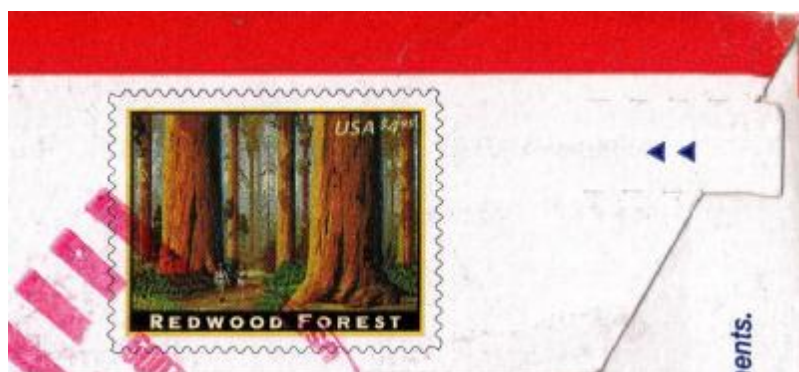


squares, and the Scott Catalog indicates the same.

I enjoy the postal envelopes of the last few years, and just recently have seen examples of the new “Forever” envelope (below right), which has a Liberty Bell design much larger than the forever stamp.



My recent surprise, shown below, was finding a priority mail imprinted envelope. I had heard about these, which feature the current priority mail stamp image instead of an adhesive stamp, but had not previously seen one. Yes, they can be purchased from the USPS, but I was delighted to have one that had been postally used, and where someone had not carelessly pulled the zip tab that tears the stamp when the envelope is opened that way. And, just for the record, the 3 examples shown here are photographically trimmed – not cut!



This month's KPS Meeting – Tuesday, February 2

2008 Scott Catalog Available to KPS Members

It has been many years since KPS purchased a copy of the Scott Catalog for members to check out from the club's library. Now, Russ Haese has a copy of the 2008 catalog on compact disc that he will lend to club members who want to update their want lists, check recent prices, or update information on their collections. Check with Russ at the next meeting if you want to borrow his copy.

Saturday Meeting is a Success!

Our first Saturday afternoon meeting, held on January 9, can easily be called a success. Seven KPS members attended, and two came because it was difficult for them to attend regular Tuesday meetings.



The meeting was held at the Frank H. McClung Museum on the UT campus, and museum curator (and KPS member) Elaine Evans arranged for the group to meet in the beautiful Decorative Arts Gallery. President Ralph Dinwiddie gave a power point presentation on recent stamp events

and asked members to complete a form indicating their opinions of 2009 US stamps. Tom Broadhead shared his stamp videos on YouTube and also showed stamp videos by other collectors that are linked to the American Philatelic Society's web site. APS circuit books and Canadian stamps from the KPS auction purchase were there, and several purchases were made. It looks as though the spring Saturday meeting will be at Roy Row's church in Maryville – stay tuned for details. We will probably return to McClung Museum for the summer Saturday meeting.

Updates on Newsletter Items

By Tom Broadhead

In the September 2009 KPS Newsletter, I showed an example of a tiny visiting card envelope that had been mailed to a member of the US military in the Philippines in 1924. Philippines military expert Jim Holub e-mailed me that the letter was forwarded to "Camp Stotsenburg."

The December 2009 "Stamp of the Month" was a mystery – not something listed in the Scott Catalog. I sent a picture of it to *Linn's*, and they published my inquiry in the "Collector's Forum," saying that the stamp is a revenue.

Used Stamps in the Scott Catalog!

While looking up this month's stamp of the month



in Russ Haese's 2008 Scott Catalog, I noticed a picture like this on the same page – a postmarked stamp, #975. I'm used to images of mint stamps in Scott, not used!

Tom

Next month's KPS Meeting – Tuesday, March 2