

HUNTSVILLE PHILATELIC CLUB NEWSLETTER

March 2007



American Philatelic
Society Chapter 597
www.stamps.org



Germany Philatelic
Society Chapter 15
www.gps.nu



Southeast Federation
of Stamp Clubs
www.stampclubs.com



This newsletter is published monthly by the Huntsville Philatelic Club. Meetings are held on the First and Third Tuesdays of every month at 7:00 p.m. at the Fern Bell Recreation Center, 107A Sanders Road SW. Visitors are always welcome.

THIS MONTH'S ACTIVITIES

First Tuesday Meeting – Mar. 6

Presentation by Frank Crown - Georgia
Confederate Postmaster Provisionals

Second Tuesday Meeting – Mar. 20

Member's Philatelic Auction Night

NEW ISSUE STAMP NEWS

This month's HPC Newsletter e-Extra features the new *Henry Wadsworth Longfellow* stamp issue. Longfellow is the 23rd honoree in the long-running United States Postal Service's Literary Arts series. The new issue, first day city table has also been updated to reflect several recent date changes.

CLUB OFFICERS

President	Kathy Campbell mcampbell7@juno.com
Vice Pres.	Michael O'Reilly mcoreilly@yahoo.com
Treasurer	Heinrich Hahn hhahn@bellsouth.net
Secretary	Arthur Cole hpc-editor@att.net
Past Pres.	Dave Dreher
Directors	Bob Adams, Ed Kazmierczak, Dave Nicolas, Fred Muhl, Wesley Swift, Mary Shaw

MEMBERSHIP INFORMATION

Huntsville Philatelic Club - P O Box 4395
Huntsville, AL 35815-4395

Membership dues are payable in January. Annual dues are \$12.00 per individual or \$15.00 per family.

The **HPC Newsletter** may be downloaded from the Southeast Federation of Stamp Clubs' web site at www.stampclubs.com/news/news-huntsville.htm

STAMP CLUB NEWS

- HUNTSPEX 2007 report from Feb. 6th meeting
 - Dealer's tables full, with one on waiting list
 - All facilities and events are scheduled
 - Prospectus distributed at regional shows
 - Show fliers available soon for posting
 - All awards on hand, except Grand Award
 - Plans call for 100-125 show covers, 100 show programs, and 100 souvenir sheets
 - Show cancel, cachet artwork in progress
 - National publicity in progress, local publicity will go out when required
- The Exhibit Workshop at the Feb. 6 meeting was well attended with a lot of good discussion. Several members, experienced and novice, plan to enter exhibits in our upcoming exhibition.
- Many of our favorite stamp dealers have again signed up to attend HUNTSPEX 2007.
 - Heinrich Hahn Traders Guild
 - Bill Vance B&W Stamps Co.
 - Dwayne Selix Prattville, Alabama
 - Fred Bradford FA Stamps
 - Bill Muenzer K-Town Stamps
 - Louise Chouinard Queen City Stamps
 - Phil Hodges Philatelic Consultants
 - Bil Di Salvatore Vest Pocket Philatelists
 - Denny Peoples Indianapolis, Indiana
 - Tony Roozen Stamps Unlimited
 - Glenn Hanle Stamp-Tique

HUNTSPEX 2007 NEWS

- The theme for HUNTSPEX 2007 is the 10th Anniversary of Mars Pathfinder and the landing of Sojourner.



HUNTSPEX 2007 MANAGERS

Show Chair	Kathy Campbell	mcampbell7@juno.com
Club Services	Dave Nicolas	256-881-8204
Facilities	Mike O'Reilly	mcoreilly@yahoo.com
Dealer liaison	Mike O'Reilly	mcoreilly@yahoo.com
Exhibit Coord.	Jim Basinski	256-771-6815
Exhibit Judge	Ronnie Nixon	rvngnixon@comcast.net
Exhibit Awards	Bob Burns	256-881-4945
Cachet / Covers	Mike O'Reilly	mcoreilly@yahoo.com
Publications	Arthur Cole	hpc-editor@att.net
USPS liaison	Heinrich Hahn	hhahn@bellsouth.net
Local Publicity	Arthur Cole	hpc-editor@att.net
National Public.	Heinrich Hahn	hhahn@bellsouth.net
Exhibit Security	Heinrich Hahn	hhahn@bellsouth.net
Soldatenstube	Hank Miller	256-881-2761

CLUB CALENDAR

Mar. 6	Frank Crown - Georgia Confederate Postmaster Provisionals
Mar. 20	Member's Philatelic Auction Night
Apr. 3	Kathy Campbell - The Unification of Germany
Apr. 17	Member's Philatelic Auction Night
May 1	HUNTSPEX Pre-show meeting
May 15	Member's Philatelic Auction Night
June 2-3	HUNTSPEX 2007 at Bevill Center
June 5	Open
June 19	Member's Philatelic Auction Night
July 3	HUNTSPEX Wrap-up meeting
July 17	Member's Philatelic Auction Night
Aug. 7	Open
Aug. 21	Member's Philatelic Auction Night
Sept. 4	Business Meeting & Club Elections
Sept. 18	Member's Philatelic Auction Night
Oct. 2	Open
Oct. 16	Member's Philatelic Auction Night
Nov. 6	Open
Nov. 20	Member's Philatelic Auction Night
Dec. 4	Open
Dec. 18	Member's Philatelic Auction Night

AREA STAMP SHOWS

March 3-4 **KNOXPEX**
Knoxville Philatelic Society, Budget Inn of America, 323 N. Cedar Bluff Road, Knoxville.
Contact Gerald Schroedl, gshroe1@utk.edu;
865-974-1861
<http://www.stampclubs.com/knoxville/index.htm>

March 10-11 **Nashville Stamp Show**
Nashville Philatelic Society, Music Valley Event Center, 2416 Music Valley Drive, Nashville.
Contact Bob Picirilli, repic@access4less.net;
www.nashvillephilatelic.org; 615-297-0183.

Mar 31-Apr 1 **Lexington Spring Stamp Show**
Henry Clay Philatelic Society, Inc., Springs Inn, 2020 Harrodsburg Rd., Lexington. Contact Paul C. Hager, showchair@henryclayphilatelics.org.
www.henryclayphilatelic.org, 859-986-3414

April 14 **Stamp and Coin Show**
Montgomery Area Stamp Club, Holiday Inn, Cobbs Ford Rd, Prattville, AL. Contact: Charles Lewis
334-264-4740, clewis@stampclubs.com

June 2-3 **HUNTSPEX 2007**
Huntsville Philatelic Club, Bevill Center and Hotel, University of Alabama in Huntsville, 301 Sparkman Drive (I-565, exit 12). Contact Heinrich Hahn, hhahn@bellsouth.net, 256-536-7785,
http://www.stampshows.com/huntsville_hpc.html
<http://www.stampclubs.com/huntsville/images/PROSPECTUS2007.pdf>

June 23-24 **LOUIPEX**
Metro Louisville Stamp Society, St. Leonard's Catholic Church, 440 Zorn Avenue, Louisville.
German Dillon, german.dillon@insightbb.com;
www.louisvillestampssociety.org; 502-749-4131.

2007 USPS NEW ISSUES

Updated Feb. 19

Jan 10 - Ella Fitzgerald - (1) 39c comm.
Jan 11 - Oklahoma Centennial - (1) 39c comm.
Jan 13 - Hershey's Kisses - (1) 39c comm.
Feb 21 - International Polar Year - (2) 84c stamp SS
Mar 15 - Henry W. Longfellow - (1) 39c comm.
Mar 16 - Silver Coffeepot - (1) 3c definitive
Mar 16 - Tiffany Lamp - (1) 1c definitive stamp
Apr - Forever Stamp - (1) def. first class stamp
May 5 - Jamestown settlement - (1) 42c comm. SS
June 25 - Pollination - (4) 42c commemoratives
June - Pacific Coast Lighthouses - (5) 42c comm.
July - Wedding Hearts - (1) 42c & (1) 62c special
July - James Stewart - (1) 42c comm.
July 26 - Marvel Comics - (10) 42c comm.
Aug 9 - Tiffany stained glass - (1) 42c comm.
Aug - Mahogany Speedboats - (4) 42c comm.
Aug - Disney Magic - (4) 42c comm. stamps
Sept - Alpine Tundra - (10) 42c commemoratives
Sept - Jury Duty - (1) 42c comm. stamp
Oct 1 - Polar Lights - (2) 42c comm. stamps
Oct - Mendez v. Westminster - (1) 42c comm.
Oct 25 - Holiday Knits - (4) 42c special stamps
Oct 25 - Madonna and Child, Luini - (1) 42c stamp
Oct 26 - Eid - Kwanzaa - Hanukkah (3) 42c stamps

Henry Wadsworth Longfellow

In March, Henry Wadsworth Longfellow (1807-1882) will be the 23rd honoree immortalized on a stamp in the Postal Service's Literary Arts series. Born in Portland, Maine — then part of Massachusetts — in 1807, Longfellow is considered the "uncrowned poet laureate" of 19th-century America. He wrote more than 400 poems and is remembered for narrative poems such as *Paul Revere's Ride* and *The Song of Hiawatha*.

The stamp art by Kazuhiko Sano features a portrait of Longfellow based on a photograph made around 1876. Background art evokes scenes from *Paul Revere's Ride*. Behind the ships' masts is a glimpse of the steeple of the Old North Church, where "a second lamp in the belfry burns" to indicate the arrival of the British by sea. To the right of the stamp, Paul Revere rides through the moonlit night, as dramatized by Longfellow's poem.

Longfellow's poetry is rooted in European traditions but the subject matter often is uniquely American. He attended Bowdoin College, where his academic talents earned him a professorship in modern languages when he graduated in 1825. To prepare for the position, Longfellow made his first trip to Europe, traveling for three years and mastering several languages. In 1837, he became a professor at Harvard and held that position until 1854.

Throughout his career, Longfellow wrote many short lyrical poems, including popular works such as *A Psalm of Life* and *Excelsior*. Although few of Longfellow's poems are starkly personal, his life was punctuated by significant family tragedies, including the deaths of two wives. His first wife, Mary, died in Europe in 1835 at the age of 23 because of a miscarriage and infection. His second wife, Fanny, died in 1861 after a spark ignited her clothing. Longfellow suffered burns while attempting to aid her, leaving scars on his face that he concealed with a beard for the rest of his life. *The Cross of Snow*, an 1879 sonnet about his anguish over the death of his wife Fanny, was published posthumously.

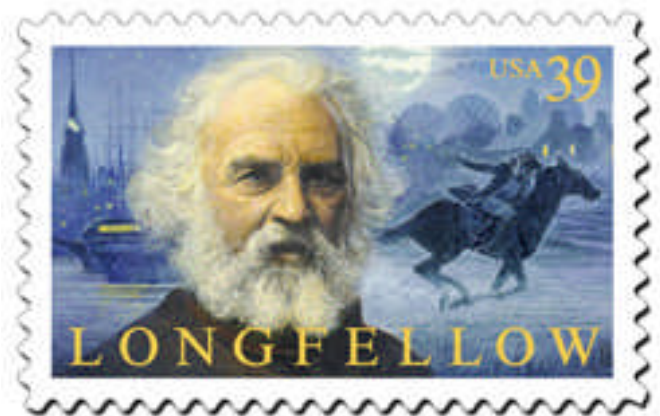
In addition to numerous shorter works, Longfellow also composed several long poems. Inspired by *The Kalevala*, the national epic of Finland, he sought to create an American poem that drew on the folklore of Native Americans. The resulting poem, *The Song of Hiawatha*, was based on a mélange of Native American traditions and legends as they were understood at the time. Today, *The Song of Hiawatha* is remembered for its hero's adventures "by the shores of Gitche Gumeé" and for its singsong meter reminiscent of the Finnish epic. The poem was a popular success when it was published in 1855 and was translated into several European languages.

Between 1863 and 1874, Longfellow wrote a series of narrative poems collectively known as *Tales of a Wayside Inn*. Issued in three parts and recalling *The Canterbury Tales* by 14th-century English poet Geoffrey Chaucer, *Tales of a Wayside Inn* takes place at a tavern in Sudbury, MA, where characters based on Longfellow's colleagues and acquaintances narrate various stories.

Longfellow struck distinctly American notes in his longer poems. His 1847 poem *Evangeline: A Tale of Acadie* follows the title character as she wanders America in search of Gabriel, her lost lover. Based on an historical event — the English eviction of French settlers from Nova Scotia in 1755 — the poem included vivid descriptions and a sense of mythology that earned it great popularity in the United States and around the world. Similarly, *The Courtship of Miles Standish*, published in 1858, dealt with the intermingled history and legends of New England. Set in Plymouth, the poem tells the story of how John Alden wooed Priscilla Mullins on behalf of Captain Miles Standish even though Alden loved her himself.

During his later years, Longfellow was a venerable figure not only in the United States, where he was invited to dine with presidents, but also internationally. While visiting England in the late 1860s, he was awarded honorary degrees from both Oxford and Cambridge and was received by Queen Victoria. He was also an honorary member of such international scholarly organizations as the Russian Academy and the Royal Spanish Academy. In 1884, he was honored with a bust in Poets' Corner at Westminster Abbey in London.

After a writing career that spanned more than 60 years, Henry Wadsworth Longfellow died on March 24, 1882, at the age of 75. He is buried in Cambridge, MA, where he spent most of his life. His former home in Cambridge is now the Longfellow National Historic Site, administered by the National Park Service.



Reprinted from USPS Community Relation, Stamp News Release Number 06-050, October 25, 2006.

